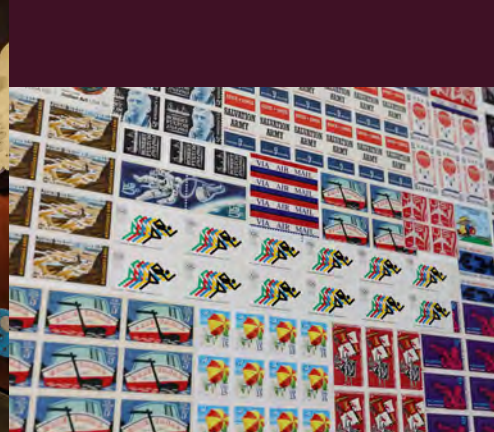
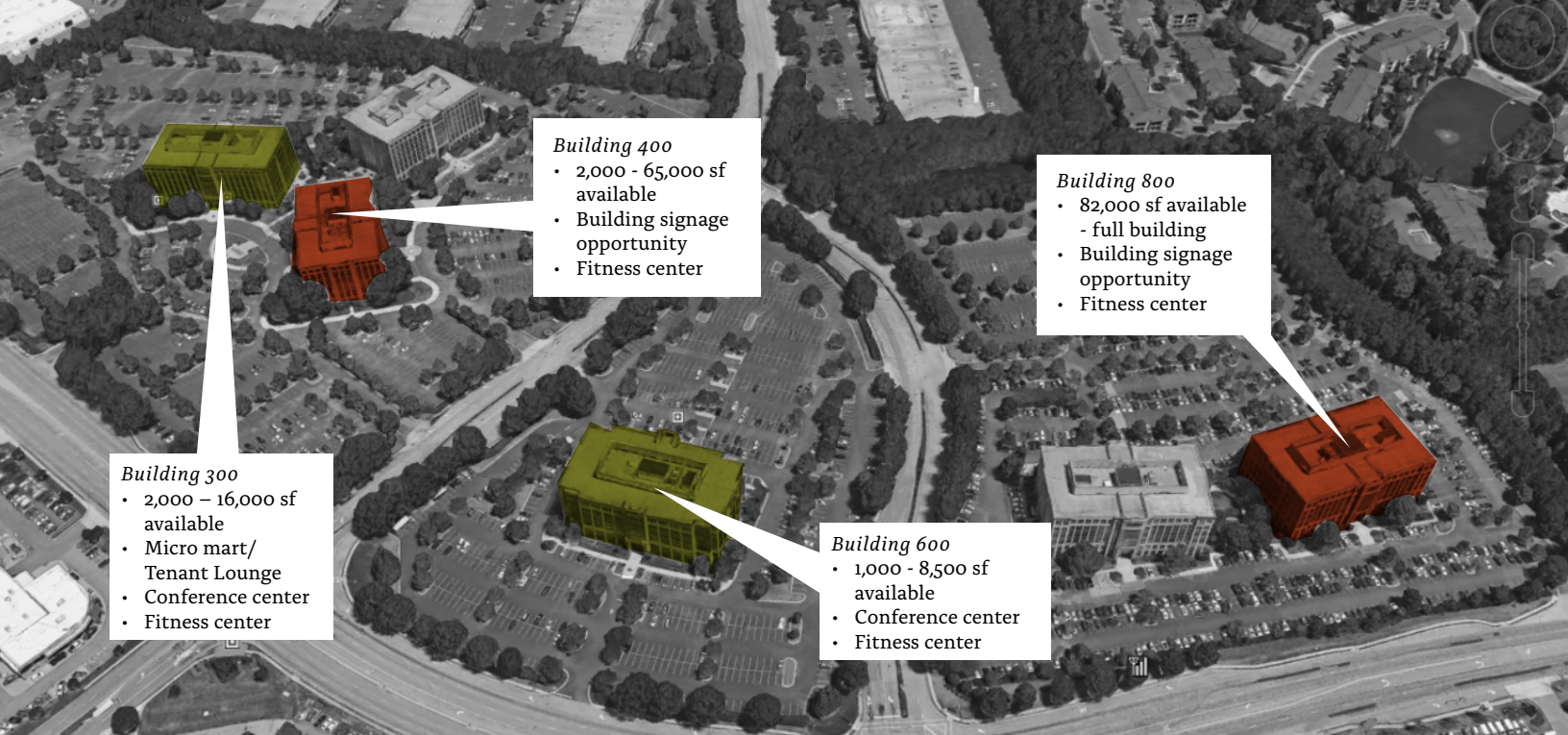


SATELLITE PLACE

2,272 - 5,698 s.f. available





Building Features

- “Plug-and-play” with furniture available
- Park-like setting within master planned campus
- Location on Satellite Boulevard in the heart of Duluth
- Convenient access to I-85, I-985, 316, and with back door access to Sugarloaf area
- Approx one mile to I-85 and 316 via Boggs Rd
- Park grab-n-go and tenant lounge - building 300
- Shared conference centers in buildings 300 and 600
- Renovated, complimentary fitness center in each building
- Direct access to numerous restaurants, hotels, shopping and other amenities
- On-site management and ownership
- 24-7 Security
- Abundant 4.5/1000 parking
- Electric car charging stations- building 300
- Fooda® onsite building 300 and seasonal food trucks building 400
- Approx one mile to Gwinnett Place Transit Center
- Bocce Ball court & courtyard- building 300/400



Spec Suites



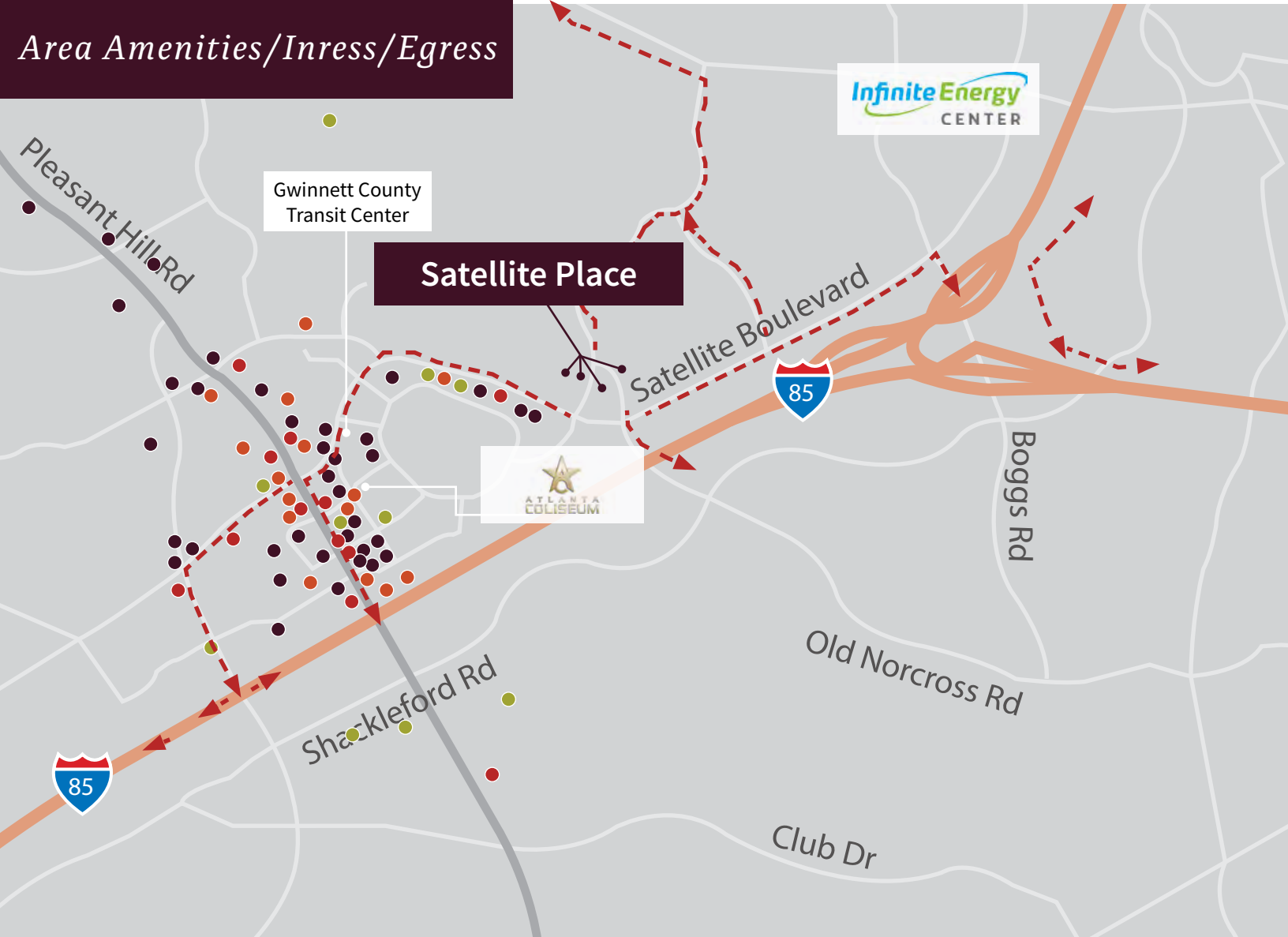
Download Floorplans



Spec Suites



Area Amenities/Inress/Egress



Restaurant



Fast Food



Financial Services



Hotels



SATELLITE PLACE 300
3237 Satellite Boulevard
Duluth, Georgia 30096

SATELLITE PLACE 400
3235 Satellite Boulevard
Duluth, Georgia 30096

SATELLITE PLACE 600
3175 Satellite Boulevard
Duluth, Georgia 30096

SATELLITE PLACE 800
3095 Satellite Boulevard
Duluth, Georgia 30096

FOR MORE INFORMATION, PLEASE CONTACT

Glenn Aspinwall
+1 404-995-2139
glenn.aspinwall@am.jll.com

Jeff Taylor
+1 404 995 2239
jeff.taylor@am.jll.com

BANYAN STREET
CAPITAL



Although information has been obtained from sources deemed reliable, neither Owner nor JLL makes any guarantees, warranties or representations, express or implied, as to the completeness or accuracy as to the information contained herein. Any projections, opinions, assumptions or estimates used are for example only. There may be differences between projected and actual results, and those differences may be material. The Property may be withdrawn without notice. Neither Owner nor JLL accepts any liability for any loss or damage suffered by any party resulting from reliance on this information. If the recipient of this information has signed a confidentiality agreement regarding this matter, this information is subject to the terms of that agreement. ©2020 Jones Lang LaSalle IP, Inc. All rights reserved.